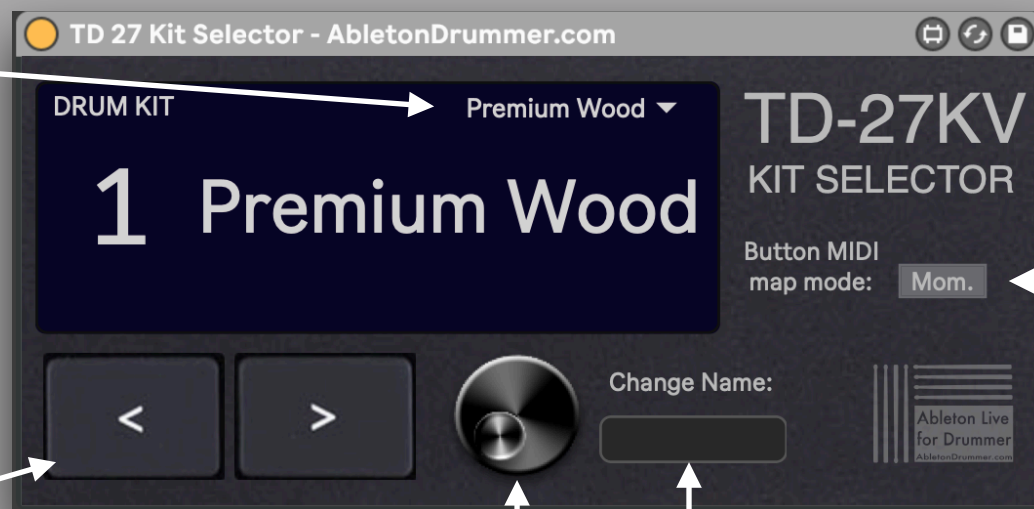




# TD-27 Kit Selector

This Max for Live device lets you select and change kits on your Roland TD-27. You can set-up (drum) pads or buttons/dials from other external MIDI controllers to switch kits directly or to scroll through kits. You can as well set up envelopes in MIDI clips (Session View) or automations (Arrangement View) to automatically change kits during a live set. You can change the kit names so that they will match up with your names on your TD-27 and you can set up the kit selector to match if you select a kit on your TD-27 directly.

Kits menu where you can view and select from all available kits



Kits UP/DOWN

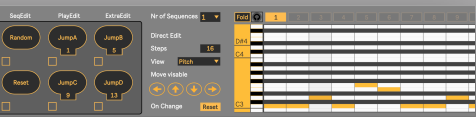
Scroll through kits

Change the name of the currently selected

When using MIDI MAP mode for using ext. MIDI controller to change kits - change the buttons between momentary/toggle mode.

[www.AbletonDrummer.com](http://www.AbletonDrummer.com)

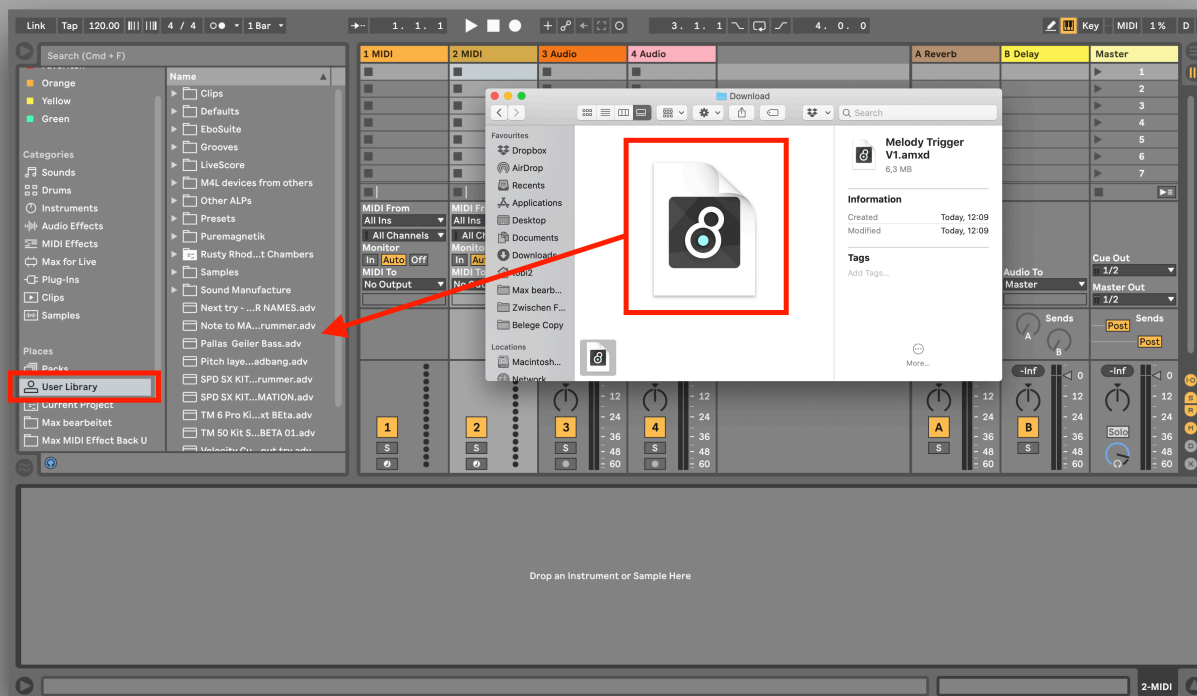


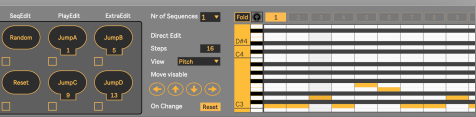


# Install Max for Live devices

Just drag + drop the (unzipped) Max for Live device file (.amxd) into your User Library in Ableton Live.

When adding the device to an Ableton Live set: Always take it from your User Library!

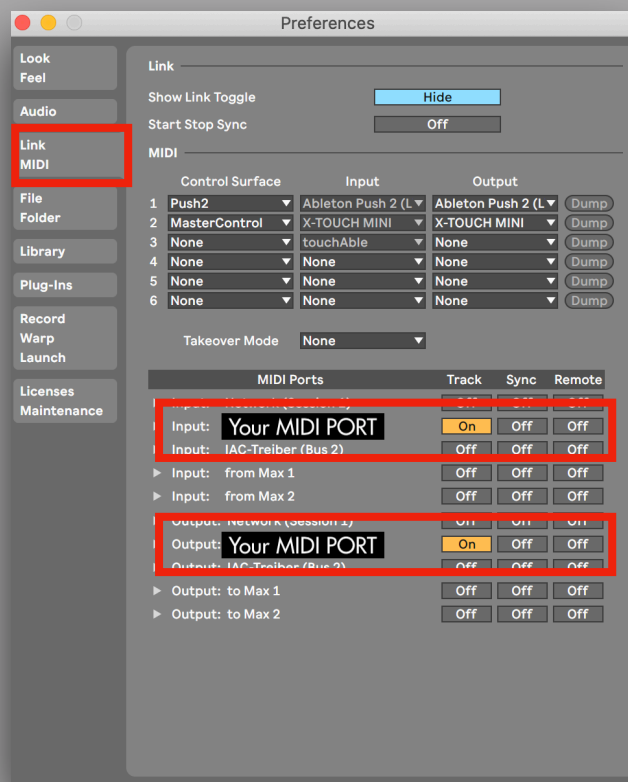




# Set-Up MIDI Connection

You need to set-up a connection to your drum module to be able to send MIDI TO and receive MIDI FROM your drum module. Most drum modules are able to establish a MIDI connection via USB. This might require you to install a driver on your MAC/PC, please refer to your modules manual for that subject. If your drum module has 5-Pin MIDI OUT/IN sockets you can establish a MIDI connection via a USB-TO-MIDI 'cable'. Most external sound cards already provide MIDI 5Pin sockets as well, which would be another way to establish a connection from your drum module to your computer running Ableton Live.

If the connection is set-up your MIDI port will show up in Ableton Lives preferences. There you need to make sure that the TRACK IN + TRACK OUT for the port you are using is activated.



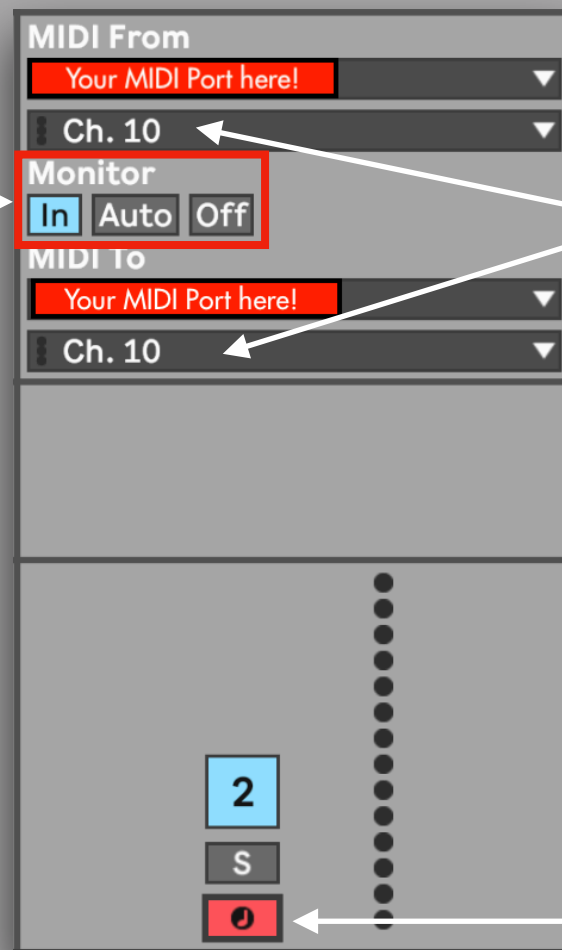


# Set-Up MIDI Routing

Now just drag+drop the Max for Live device onto an empty MIDI track. You need to select your MIDI port (the drum modules name/the MIDI-to-USB cable/the ext. sound card) under MIDI FROM and MIDI TO on this track. Select channel "10" for both. This is per default the MIDI channel which is reserved for drums. Usually all drum modules are set to send/receive on channel 10 per default. You will then need to activate the track to be able to receive MIDI. You can do this by selecting "IN" for the monitor section or by activating the "ARM" ('Record') button + setting the monitor to "AUTO".

NOTE: In some use cases routing MIDI FROM and TO on the same channel might lead to some MIDI 'Loop-Back' /unwanted behaviour. If you experiences this, you can change e.g. the receiving MIDI channel on your drum module and send the MIDI TO on this newly selected channel.

"MONITOR"



Set to CH 10

ARM button



# KIT-MENU

The Kit selector has a KIT-MENU where you can see and select all available kits. Just click on the little facing down triangle to open the menu view.

Click on kit you  
want to select



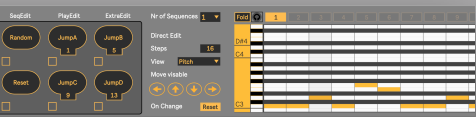
Overtones	Tight Funk	User Kit
Metal	80's Pop	User Kit
Compact+	Roots Reggae	User Kit
Heavy Rock	Indie Rock	User Kit
Beech Wood	Transient	User Kit
Smashed!	Metal Master	User Kit
ShallowShell	Punchy Pop	User Kit
Studio B	House	User Kit
Punk Rock	Crunch Beat	User Kit
Rootsy Funk	Kick Bonkers	User Kit
Solid Maple	Echo Rock	User Kit
Tight & Dry	Electro Hip	User Kit
Rocky Road	UK Dub	User Kit
Fusion	Clap Pop	User Kit
Old Heads	Custom Wood	User Kit
Lounge Vibes	Progressive	User Kit
Jazz Danzz	ElectroDrums	User Kit
KICK vs SNR	808	User Kit
All Rounder	909	User Kit
BubingaSharp	User Kit	User Kit
Wide Open	User Kit	User Kit
HipHop Vinyl	User Kit	User Kit
Ultra DnB	User Kit	User Kit
Tight Pop	User Kit	User Kit
Solid Rock	User Kit	User Kit
Short Tail	User Kit	User Kit
Ambient Beat	User Kit	User Kit
RnB&Trapped	User Kit	User Kit

Menu Window

Solid Rock

Click here to open MENU

[www.AbletonDrummer.com](http://www.AbletonDrummer.com)

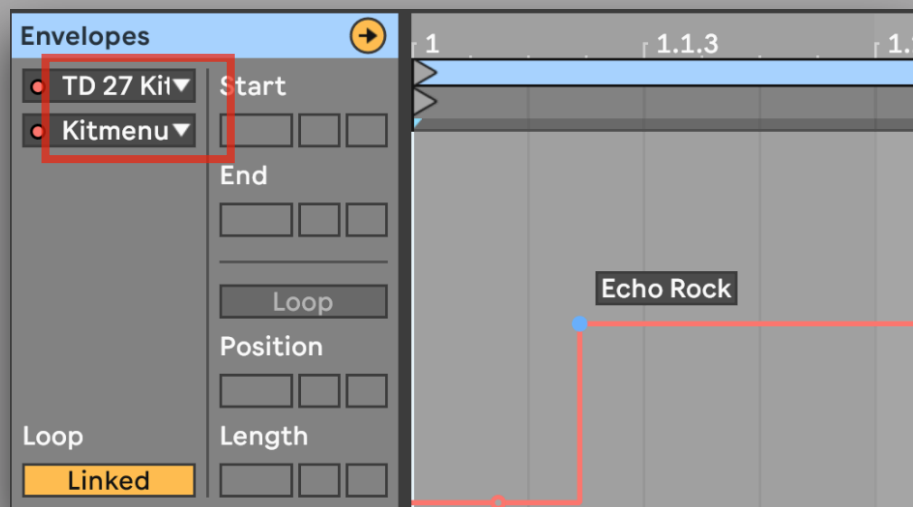


# AUTOMATED KIT CHANGES

You can set up automated kit changes. This becomes handy if you want to automatically select kits e.g. selecting the right kit when starting a song.

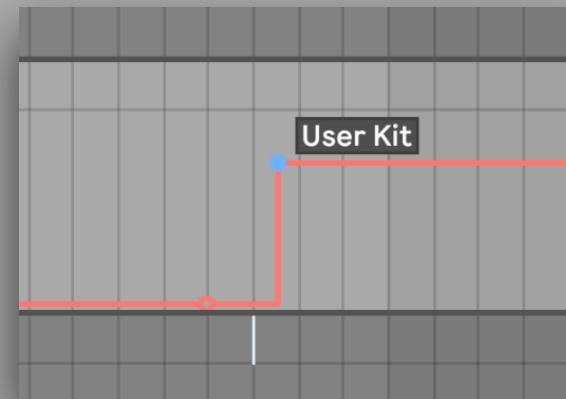
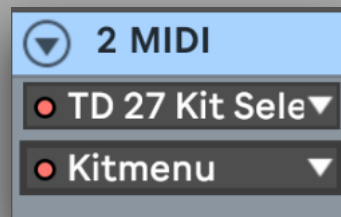
## Session View

You will need a MIDI clip to set up an automated kit change in Session View. Open the "Envelope" view of this clip. Select the Max for Live device and then the "KIT-MENU" parameter. You can now see a red line on which you can set 'dots' by double-click. When moving those 'dots' up + down the name of the available kits are being shown. You can set those 'dots' where you need the change to happen. When this clip is being played the kit selector will 'jump' to the kit you selected when the cursor is passing it.



## Arrangement View

Select the "Automation Mode" to be able to access and create automations in Arrangement View. Select the Max for Live device and then the "KIT-MENU" parameter. You can now see a red line on which you can set 'dots' by double-click. When moving those 'dots' up + down the name of the available kits are being shown. You can set those 'dots' where you need the change to happen. When the transport is playing and passing this/these 'dots' the kit selector will 'jump' to the kit you selected.





# MORE RESOURCES

**ABLETON DRUMMER SERVICES**

**MAX FOR LIVE**

**ONLINE SESSION**

**ONLINE COURSES**

**CLICK FOR MORE INFO**

For more information on this and other Max for Live devices, online courses and 1-to-1 online teaching please visit:

[www.AbletonDrummer.com](http://www.AbletonDrummer.com)

Please join the [Ableton Drummer Facebook Group](#) to exchange with other drummers using Ableton Live.

