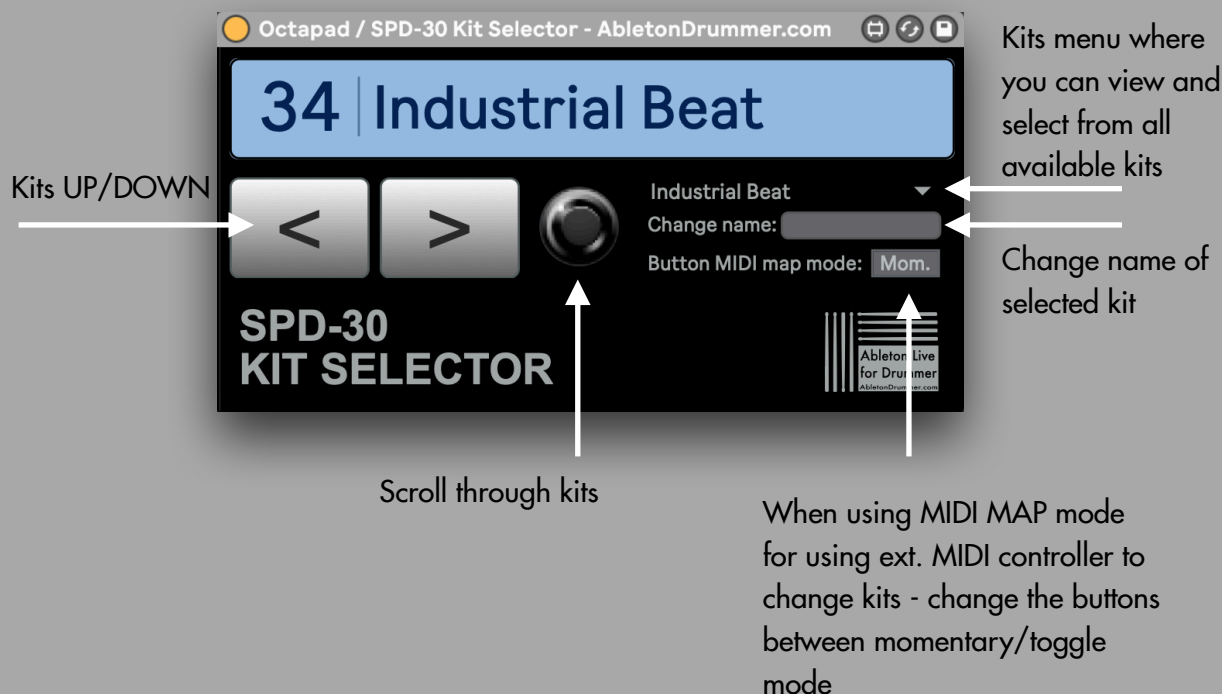
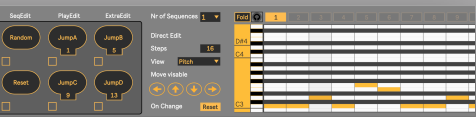




SPD-30 Scene/Kit Selector

This Max for Live device lets you select and change kits on your ROLAND OCTAPAD / SPD-30. You can set-up (drum) pads or buttons/dials from other external MIDI controllers to switch kits directly or to scroll through kits. You can as well set up envelopes in MIDI clips (Session View) or automations (Arrangement View) to automatically change kits during a live set.

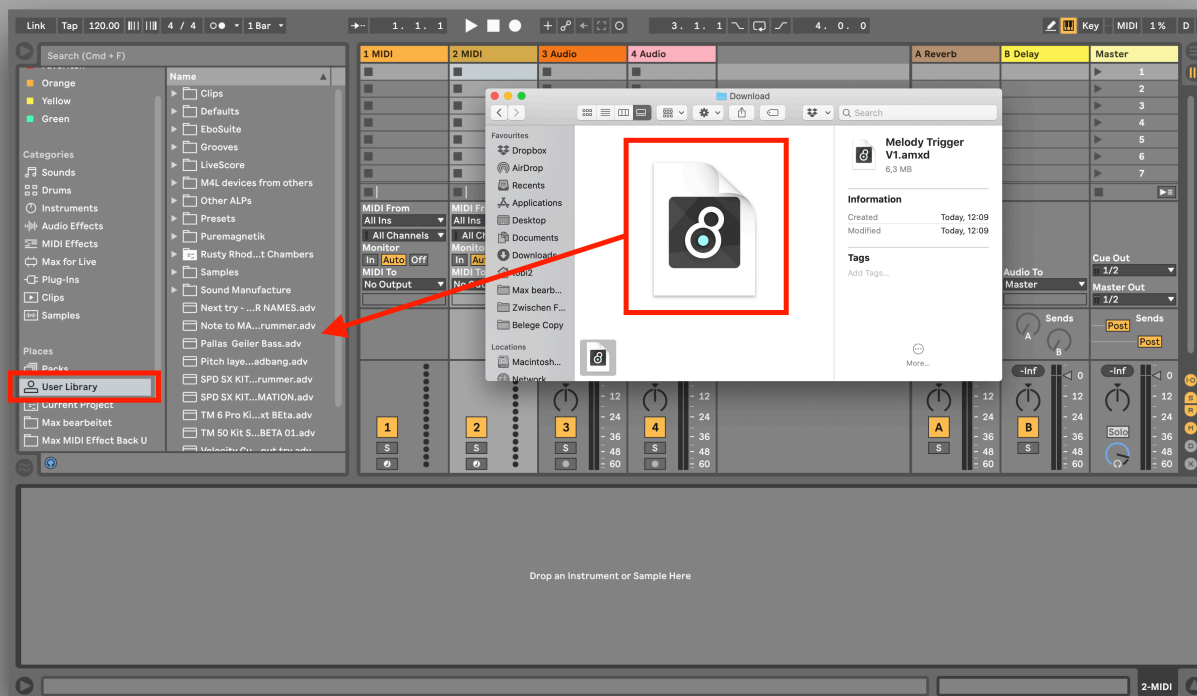


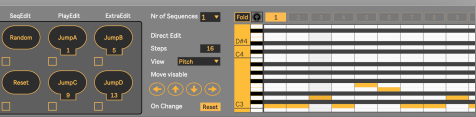


Install Max for Live devices

Just drag + drop the (unzipped) Max for Live device file (.amxd) into your User Library in Ableton Live.

When adding the device to an Ableton Live set: Always take it from your User Library!

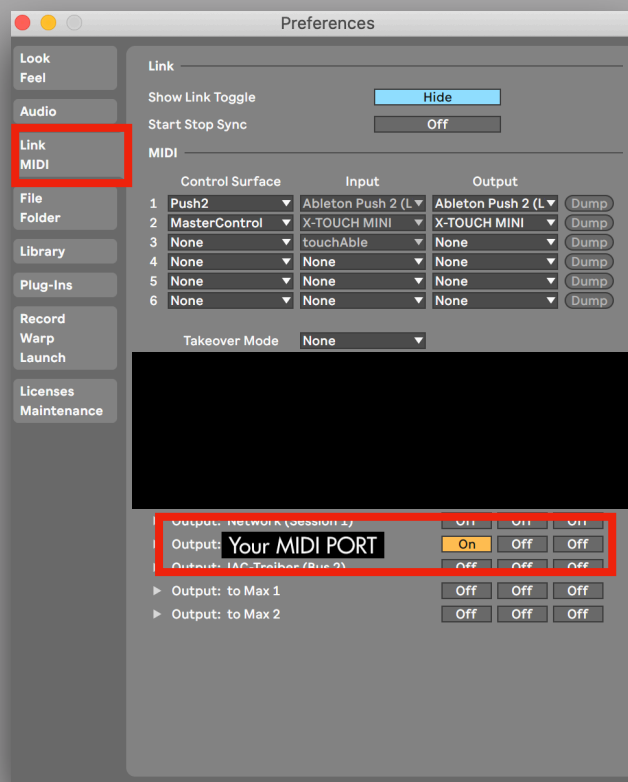




Set-Up MIDI Connection

You need to set-up a USB MIDI connection to your SPD-30 to be able to send MIDI from your computer to your SPD-30. This might require you to install a driver on your MAC/PC - you will find the available drivers [HERE](#).

If the connection is set-up your MIDI port (SPD-30) will show up in Ableton Lives preferences. There you need to make sure that the TRACK OUT is being set to ON.

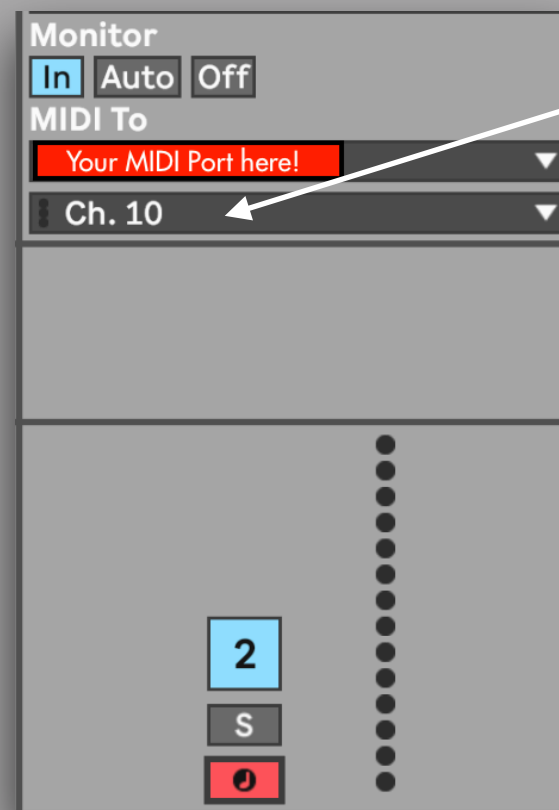




Set-Up MIDI Routing

Now just drag+drop the Max for Live device onto an empty MIDI track. You need to select your SPD-30 MIDI port under MIDI TO on this track and set this to channel "10". This is per default the MIDI channel which is reserved for drums. Usually all drum modules are set to send/receive on channel 10 per default.

NOTE: In some use cases routing MIDI FROM and TO on the same channel might lead to some MIDI 'Loop-Back' / unwanted behaviour. If you experiences this, you can change e.g. the receiving MIDI channel on your drum module and send the MIDI TO on this newly selected channel.

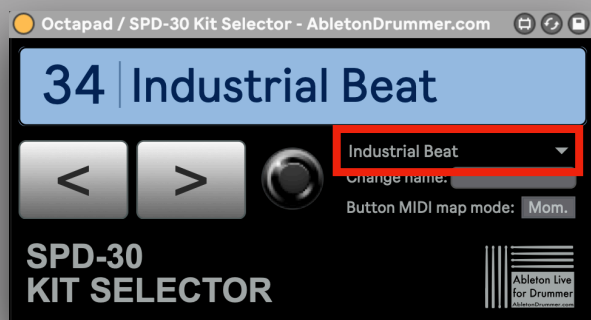


Set to CH 10



SCENES/KIT-MENU

The Kit selector has a KIT-MENU where you can see and select all available kits. Just click on the little facing down triangle to open the menu view.

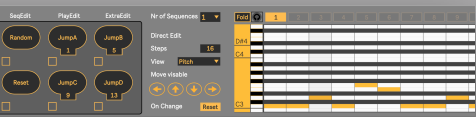


Click here to open MENU

Click on the preset you want to select



www.AbletonDrummer.com

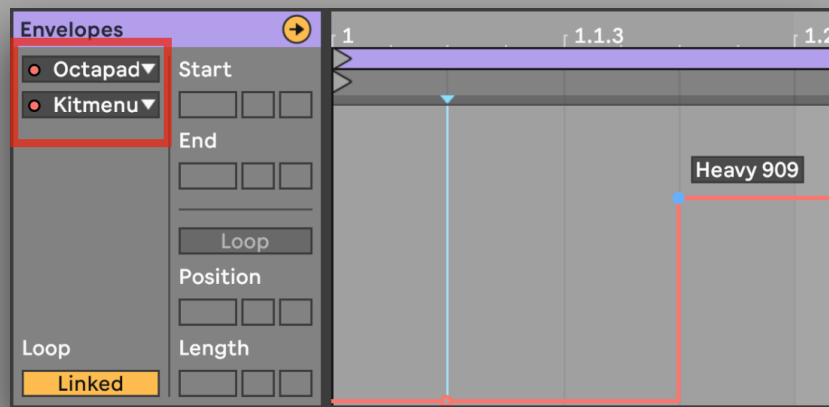


AUTOMATED KIT CHANGES

You can set up automated kit changes. This becomes handy if you want to automatically select kits e.g. selecting the right kit when starting a song.

Session View

You will need a MIDI clip to set up an automated kit change in Session View. Open the "Envelope" view of this clip. Select the Max for Live device and then the "Kitmenu" parameter. You can now see a red line on which you can set 'dots' by double-click. When moving those 'dots' up + down the name of the available kits are being shown. You can set those 'dots' where you need the change to happen. When this clip is being played the kit selector will 'jump' to the kit you selected when the cursor is passing it.



Arrangement View

Select the "Automation Mode" to be able to access and create automations in Arrangement View. Select the Max for Live device and then the "Kitmenu" parameter. You can now see a red line on which you can set 'dots' by double-click. When moving those 'dots' up + down the name of the available kits are being shown. You can set those 'dots' where you need the change to happen. When the transport is playing and passing this/these 'dots' the kit selector will 'jump' to the kit you selected.





MORE RESOURCES

ABLETON DRUMMER SERVICES

MAX FOR LIVE

ONLINE SESSION

ONLINE COURSES

CLICK FOR MORE INFO

For more information on this and other Max for Live devices, online courses and 1-to-1 online teaching please visit:

www.AbletonDrummer.com

Please join the [Ableton Drummer Facebook Group](#) to exchange with other drummers using Ableton Live.

